



# 2008-2009 GMT Quarterly Report for District (or Undistricted) **District B 3**



GMT: **PEDRO A BOTELLO ORTIZ**

Location: **MEXICO**

GMT CA: **3**

## CLUBS

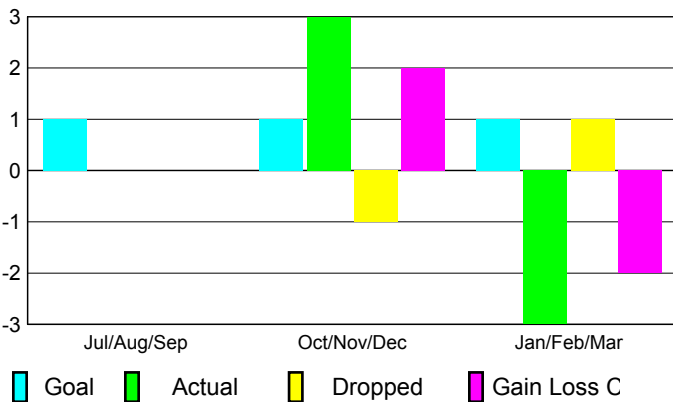
### Club Results 2008-2009

### Clubs 2007-2008

| Month         | New Club Goal | Actual New Clubs | Actual Dropped Clubs | Gain/Loss of Clubs | Gain/Loss of Clubs |
|---------------|---------------|------------------|----------------------|--------------------|--------------------|
| Jul/Aug/Sep   | 1             | 0                | 0                    | 0                  | 1                  |
| Oct/Nov/Dec   | 1             | 3                | -1                   | 2                  | 0                  |
| Jan/Feb/Mar   | 1             | -3               | 1                    | -2                 | 0                  |
| <b>Totals</b> | <b>3</b>      | <b>0</b>         | <b>0</b>             | <b>0</b>           | <b>1</b>           |

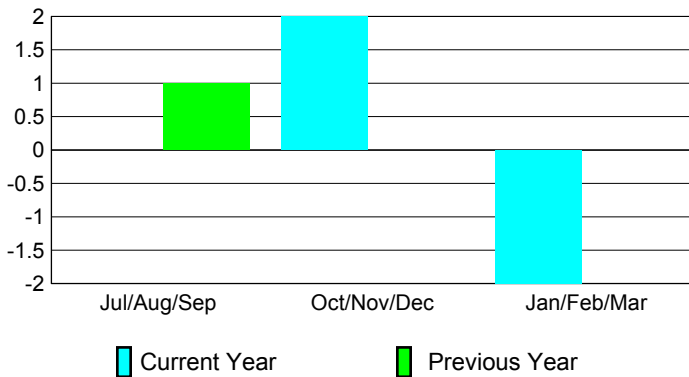
### Club Results 2008-2009

Goal, New, Dropped, Gain/Loss



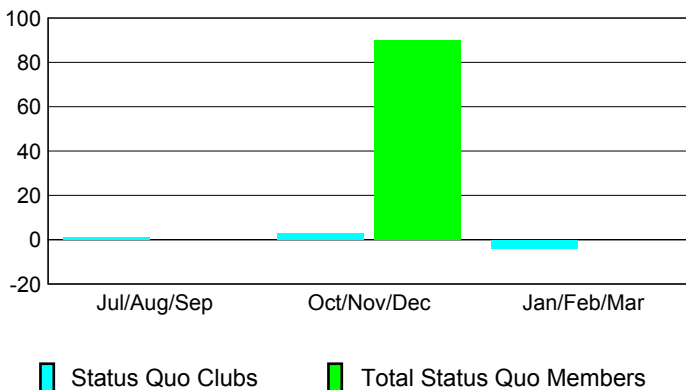
### Comparison of Club Gain/Loss

Current Year Compared to the Previous Year



### YTD Status Quo Clubs 2008-2009

Status Quo Clubs Compared to Status Quo Members



## MEMBERSHIP

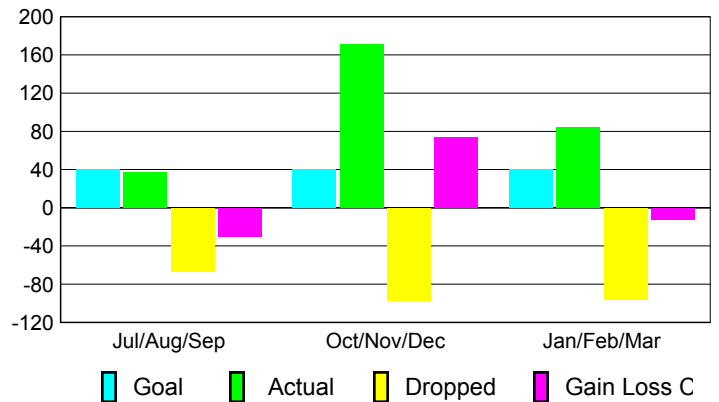
### Membership Results 2008-2009

### Membership 2007-2008

| Month         | Net Memb Goal | Actual New Memb | Actual Dropped Memb | Gain/Loss of Memb | Gain/Loss of Memb |
|---------------|---------------|-----------------|---------------------|-------------------|-------------------|
| Jul/Aug/Sep   | 40            | 37              | -67                 | -30               | -6                |
| Oct/Nov/Dec   | 40            | 171             | -97                 | 74                | -41               |
| Jan/Feb/Mar   | 40            | 84              | -96                 | -12               | -42               |
| <b>Totals</b> | <b>120</b>    | <b>292</b>      | <b>-260</b>         | <b>32</b>         | <b>-89</b>        |

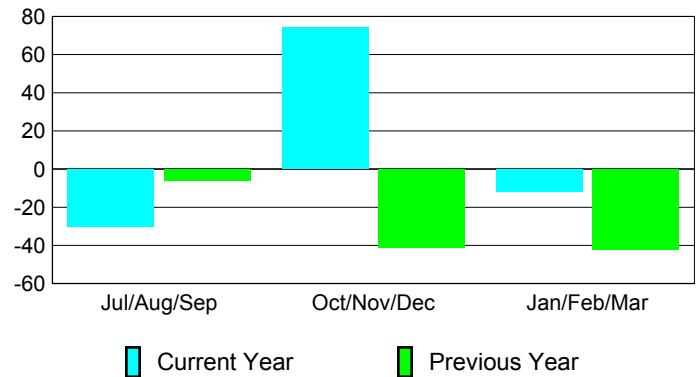
### Membership Results 2008-2009

Goal, New, Dropped, Gain/Loss



### Comparison of Membership Gain/Loss

Current Year Compared to the Previous Year



### Gender Comparison 2008-2009

